

# AS-BUILT LAYOUT OF SUBMARINE PIPELINE

| NO. | REFERENCE DRAWING NO. | DRAWING TITLE |
|-----|-----------------------|---------------|
|     |                       |               |

**LEGEND**

- BED ROCK CONTOURS FROM UST21 SURVEY ON OCTOBER 2008 AND OCTOBER 2009
- SEABED CONTOURS FROM UST21 SURVEY FROM OCTOBER TO NOVEMBER 2010
- SUBMARINE PIPELINE ROUTE (Rev-8)
- AS-BUILT SUBMARINE PIPELINE
- REVISED APPROACH CHANNEL LIMITS FROM DESIGN DRAWING No. D105234/DR-D/2001 Rev-C OF 17.06.2011

FOR THE LIST OF COORDINATES, SEE BOTTOM LEFT CORNER OF THIS DRAWING

**NOTES**

- BATHYMETRIC DATA IN LWOST FROM UST21 SURVEY IN FROM 30th OCTOBER 2010 TO 14th NOVEMBER 2010
- APPROACH CHANNEL POSITIONS RELEVANT Drg No. D105234/DR-D/2001 Rev-C AND 2002 Rev-B of 17-06-2011
- PIPELINE START POINT  
Chainage: 13.8m (Design Pipeline Chainage)  
Co-ordinates: 89867.6m E  
197625.7m N

GRAPHIC SCALE  
0 500 1000 1500 m  
S=1:30,000

| REV. | DESCRIPTION OF REVISION      | DESIG. | CHEC. | APPRO. | DATE    |
|------|------------------------------|--------|-------|--------|---------|
| E    | AS-BUILT ISSUE               | -      | YHS   | OYP    | MAY 15  |
| D    | AS-BUILT ISSUE               | -      | YHS   | OYP    | APR. 12 |
| C    | AS-BUILT ISSUE               | -      | YHS   | OYP    | FEB. 12 |
| B    | AS-BUILT ISSUE (PRELIMINARY) | -      | YHS   | OYP    | SEP. 11 |
| A    | ISSUED FOR CONSTRUCTION      | PARK   | -     | -      | MAR. 10 |
| 8    | CHANGED ROUTE                | PARK   | -     | -      | DEC. 09 |
| 7    | CHANGED ROUTE                | PARK   | -     | -      | DEC. 09 |
| 6    | CHANGED ROUTE                | PARK   | -     | -      | NOV. 09 |
| 5    | CHANGED ROUTE                | PARK   | -     | -      | AUG. 09 |
| 4    | CHANGED ROUTE                | PARK   | -     | -      | MAR. 09 |
| 3    | CHANGED ROUTE                | PARK   | -     | -      | MAR. 09 |
| 2    | CHANGED ROUTE                | PARK   | -     | -      | FEB. 09 |
| 1    | CHANGED ROUTE                | PARK   | -     | -      | NOV. 08 |
| D    | ISSUED FOR APPROVAL          | PARK   | -     | -      | SEP. 08 |

CLIENT  
**SRI LANKA PORTS AUTHORITY**

CONSULTANT  
**SCOTT WILSON**

PROJECT TITLE  
**COLOMBO PORT EXPANSION PROJECT**

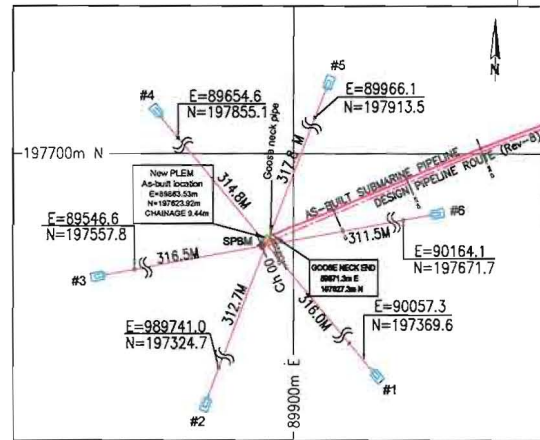
HYUNDAI PROJECT NO.  
DRAWING TITLE  
**SUBMARINE PIPELINE DIVERSION LAYOUT OF AS-BUILT PIPELINE AND DESIGN PIPELINE ROUTE (Rev-8)**

| SCALE       | DRAWN      | DESIGNED   | CHECKED   | APPROVED   |
|-------------|------------|------------|-----------|------------|
| 1 : 30,000  | NRJ        | N.S.Park   | YHS       | OYP        |
| DATE ISSUED | 2012.05.15 | 2012.04.04 | 2009.12.- | 2012.04.07 |
|             |            |            |           | 2012.04.09 |

**HYUNDAI**  
ENGINEERING & CONSTRUCTION CO., LTD.  
SEOUL, KOREA

DRAWING NO.  
**CPEP-SP-DW-G-001**

CLASSIFICATION  
**E**



## AS-BUILT SUBMARINE PIPELINE

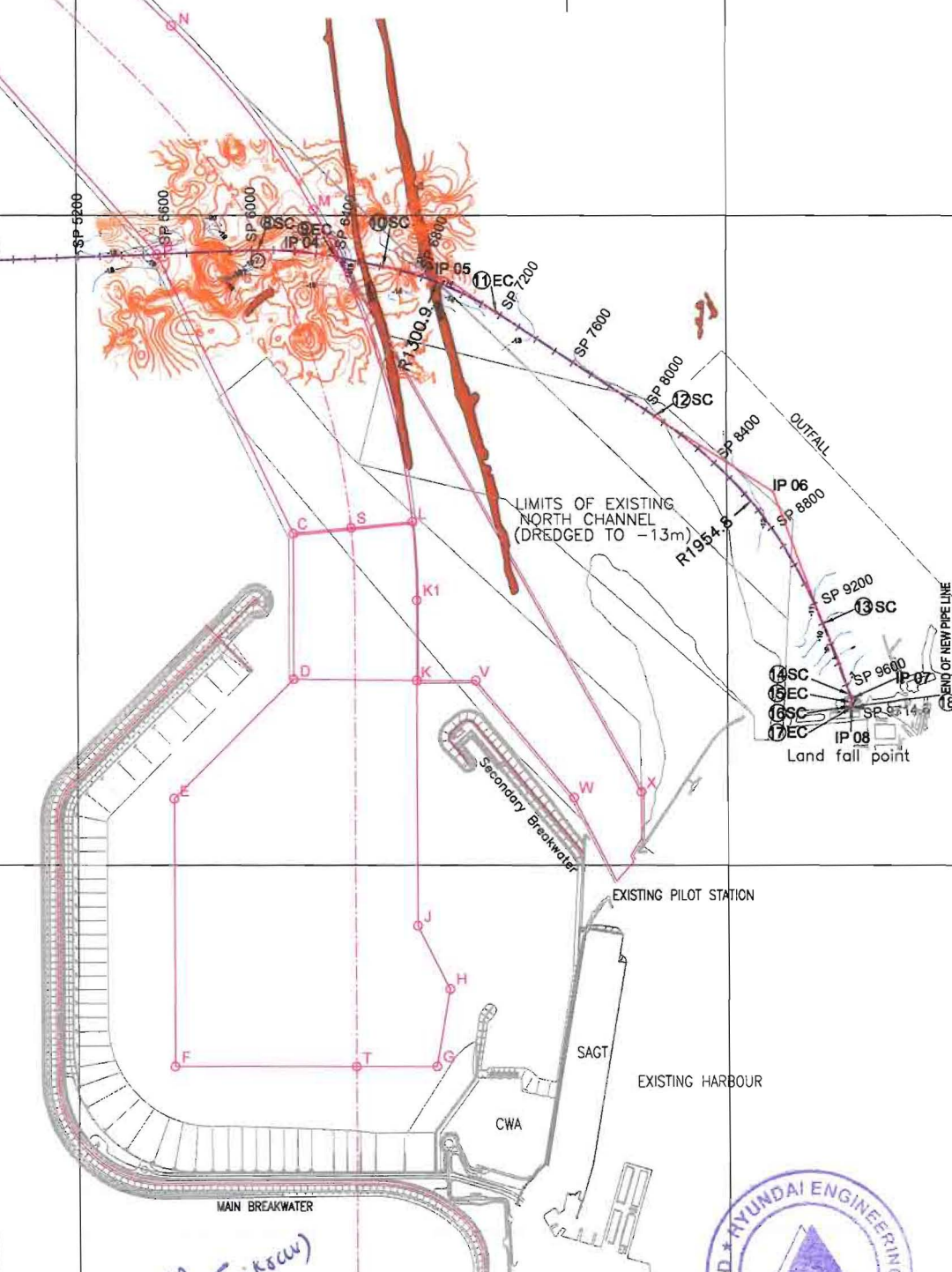
| Point No. | Easting(m) | Northing(m) | Chainage(m) | Radius(m) | Remarks                                  |
|-----------|------------|-------------|-------------|-----------|--|
| ①         | 89867.561  | 197625.680  | 13.8        | --        | Start of Pipeline (Including goose neck) |
| ②         | 90107.625  | 197726.351  | 274.2       | --        | Start of curve                           |
| --        | 90246.470  | 197786.550  | --          | 1548.9    | IP 01                                    |
| ③         | 90394.342  | 197818.737  | 575.9       | --        | End of curve                             |
| ④         | 90414.993  | 197822.784  | 597.0       | --        | Start of curve                           |
| --        | 90618.339  | 197859.074  | --          | 1577.9    | IP 02                                    |
| ⑤         | 90824.174  | 197841.799  | 1007.8      | --        | End of curve                             |
| ⑥         | 92224.445  | 197728.146  | 2412.7      | --        | Start of curve                           |
| --        | 92354.218  | 197719.671  | --          | 3351.5    | IP 03                                    |
| ⑦         | 92484.257  | 197721.277  | 2672.7      | --        | End of curve                             |
| ⑧         | 95839.312  | 197838.714  | 6030.4      | --        | Start of curve                           |
| --        | 96020.287  | 197839.779  | --          | 1904.6    | IP 04                                    |
| ⑨         | 96198.224  | 197806.740  | 6391.5      | --        | End of curve                             |
| ⑩         | 96417.217  | 197762.064  | 6415.0      | --        | Start of curve                           |
| --        | 96700.952  | 197714.025  | --          | 1300.9    | IP 05                                    |
| ⑪         | 96937.952  | 197550.795  | 7181.0      | --        | End of curve                             |
| ⑫         | 97667.666  | 197072.064  | 8054.0      | --        | Start of curve                           |
| --        | 98212.341  | 196721.985  | --          | 1954.8    | IP 06                                    |
| ⑬         | 98440.470  | 196115.630  | 9303.9      | --        | End of curve                             |
| ⑭         | 98565.452  | 195788.344  | 9654.8      | --        | Start of curve                           |
| --        | 98573.837  | 195770.555  | --          | 71.6      | IP 07                                    |
| ⑮         | 98571.958  | 195750.980  | 9693.2      | --        | End of curve                             |
| ⑯         | 98572.499  | 195734.252  | 9704.9      | --        | Start of curve                           |
| --        | 98572.692  | 195729.828  | --          | 4.7       | IP 08                                    |
| ⑰         | 98578.078  | 195730.302  | 9712.6      | --        | End of curve                             |
| ⑱         | 98580.180  | 195730.487  | 9714.6      | --        | End of New pipeline                      |

Horizontal length from Pipeline start to Landfall = 9.701 km  
(As-built pipeline Chainage derived from Design pipeline route Rev-8)

RESTRICTED AREA  
ONLY VESSELS USING  
SPBM PERMITTED TO ENTER

## REVISED APPROACH CHANNEL LIMITS

| POINTS | EAST       | NORTH      |
|--------|------------|------------|
| A      | 93355.019  | 200096.916 |
| B      | 95372.905  | 197820.565 |
| C      | 95995.208  | 196529.751 |
| D      | 95995.208  | 195860.596 |
| E      | 95443.000  | 195308.388 |
| F      | 95443.000  | 194071.000 |
| G      | 96650.814  | 194071.000 |
| H      | 96711.790  | 194428.126 |
| J      | 96565.208  | 194721.290 |
| K      | 96565.208  | 195854.913 |
| K1     | 96565.208  | 196225.075 |
| L      | 96547.707  | 196583.790 |
| M      | 96095.168  | 198025.979 |
| N      | 95440.025  | 198875.843 |
| P      | 92393.661  | 201816.255 |
| Q      | 92970.950  | 200864.003 |
| R      | 95242.047  | 198670.831 |
| S      | 96264.0609 | 196556.047 |
| T      | 96280.208  | 194071.000 |
| V      | 96834.527  | 195854.913 |
| W      | 97287.677  | 195313.678 |
| X      | 97599.573  | 195340.326 |
| Y      | 98278.941  | 196134.333 |



**SCOTT WILSON**  
P.O Box 2271  
CPEP, Port of Colombo  
Colombo 01  
Phone: + 94-11-2393480  
Fax: + 94-11-2393483

**HYUNDAI ENGINEERING & CONSTRUCTION CO., LTD.**  
SEOUL, KOREA